

## SA Rod end BEM10-60-501-DURBAL - BEM10-60-501-DURBAL

<https://www.123bearing.ca/bearing-housing/rod-end/sa/bem10-60-501-durbal>

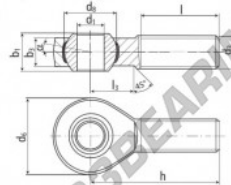
### BEM10-60-501



male thread;  
maintenance free,  
adapter sizes  
according to  
DIN ISO 12240-4,  
series K



**DURBAL® heavy-duty rod ends  
with integral spherical  
plain bearing in stainless steel**



rod end housing:  
stainless steel 1.4301, rolled thread,  
surface with pickling treatment

joint ball:  
stainless steel, hardened and ground,  
surface superfinished

race:  
nylon / teflon / glass fibre compound

tolerances:  
see page 10

order number		measurements [mm]			
type	right-hand thread left-hand thread	d <sub>1</sub>	d <sub>2</sub>		
BEM 10 -60	-501	10	M 10		
		d <sub>3</sub>	d <sub>4</sub>		
		28	19,00		
		h <sub>1</sub>	h <sub>2</sub>		
		14	10,5		
measurements [mm]		weight		basic load rating	
type	h	l	l <sub>3</sub>	α <sub>1</sub> <sup>1</sup>	α <sub>2</sub> <sup>2</sup>
BEM 10	48	29	15	13,5	8,0
				[kg]	dyn
					stat.
					C
					[N]
					C <sub>2</sub>
					[N]
					6400
					14000

## PRODUCT FEATURES

Brand	DURBAL
N° Ean13	3663952509730
Inside diameter	10 mm
Outside diameter	28 mm
Thickness	14 mm
Type	SA
Weight	60 g
Thread	Right-hand thread
Lubrication	without
Packaging	1

[contact@123bearing.ca](mailto:contact@123bearing.ca)

+1(646) 712 9672

CRT4 de Lesquin 60 Rue Du Haut De Sainghin 59273 Fretin FRANCE